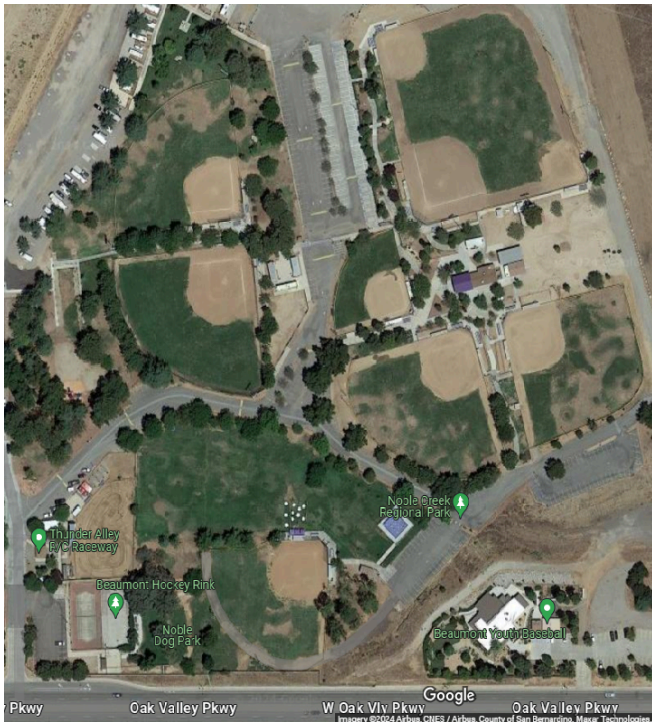


Rental Information

To check availability please call the District office at 951-845-9555 between the hours of 8:00am-5:00pm Monday thru Thursday and 8:00am-12:00pm on Fridays. The office is closed on all major holidays. Practice field rentals are limited and are approved by the District if available. Occasionally, the District may find it necessary to closed the fields due to weather or unforeseen circumstances. In that event, the District will give as much notice as possible.



Board of Directors

- Janet Covington - Chair
- John Flores - Vice Chair / Secretary
- Chris Dierks - Treasurer
- Dan Hughes - Director
- Christian Linneman- Director

Mickey Valdivia - General Manager
mickey@bcvparks.com



For more information,
contact us here.

951-845-9555
www.bcvparks.com
noah@bcvparks.com



Beaumont- Cherry Valley Recreation and Park District

BALL FIELDS



Looking for fields for
practices or a
tournament?

Rental Rates

Monthly Practice Rate:

\$350/month

Includes (2) practices per week
for (2) hours each

Tournament Rental Rates:

\$350/day for each field
reserved.

1-2 Fields

Refundable Deposit: \$250
Maintenance Fee: \$250/day

3 or More Fields

Refundable Deposit: \$500
Maintenance Fee: \$500/day

\$50 Single Field Game

(2) Game Maximum, No Lights,
No Set-Up, No Bases

Tournament Fees Include:

- Field Rental
- Staff available for general trouble shooting
- Field Maintenance - set-up for 1st game(s) w/ bases & pitching mounds, field(s) will be periodically drug, watered and chalked.
- Available and stocked restrooms
- Restrooms are periodically cleaned
- Trash barrels emptied

All trash in the dugouts and bleachers are the responsibility of the tournament personnel.

**LIGHTS ARE AVAILABLE
ON ALL FIELDS (1-7)**

Field Details

Field #1

- Bullpen - 1st and 3rd baseline
- Base pegs: 60', 65', 70', 80', 90'
- Center 395', Left 326', Right 319'

Field #2

- Bullpen - 1st and 3rd baseline
- Base pegs: 60', 65', 70'
- Center 263', Left 226', Right 217'

Field #3

- Bullpen - 1st baseline
- Base pegs: 60', 65', 70'
- Center 238', Left 233', Right 233'

Field #4

- Base pegs: 50', 55', 60'
- Center 145', Left 145', Right 146'

Field #5

- Base pegs: 60', 65'
- Center 231', Left 235', Right 231'

Field #6

- Bullpen - 1st and 3rd baseline
- Base pegs: 60', 65', 70', 80'
- Center 248', Left 247', Right 249'

Field #7

- Base pegs: 60', 65', 70'
- Center 223', Left 208', Right 224'