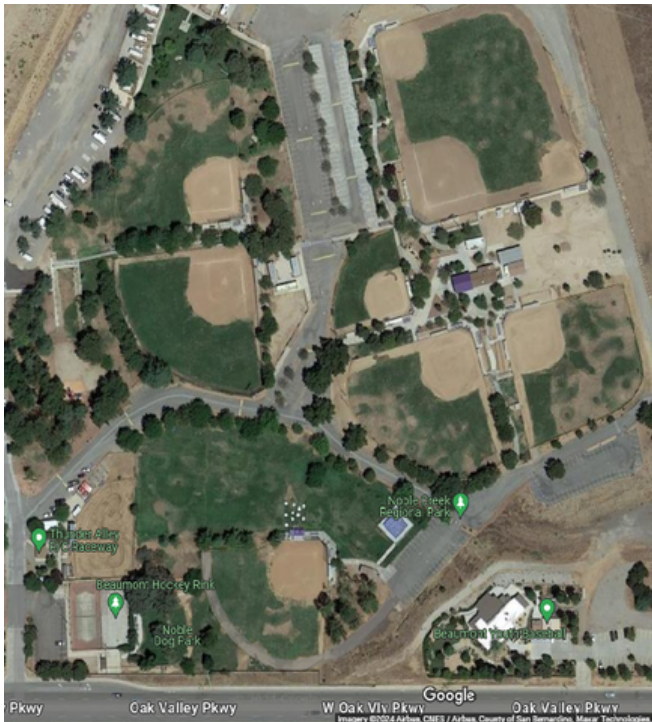


## Rental Information

To check availability please call the District office at 951-845-9555 between the hours of 8:00am-5:00pm Monday thru Thursday and 8:00am-12:00pm on Fridays. The office is closed on all major holidays. Practice field rentals are limited and are approved by the District if available. Occasionally, the District may find it necessary to closed the fields due to weather or unforeseen circumstances. In that event, the District will give as much notice as possible.



## Board of Directors

Chris Diercks - Chairman  
Denise Ward - Vice Chair/Secretary  
John Flores - Treasurer  
Dan Hughes - Director  
Richard Lawhead - Director

Mickey Valdivia - General Manager  
mickey@bcvparks.com



For more information,  
contact us here.

951-845-9555  
www.bcvparks.com  
noah@bcvparks.com



## Beaumont- Cherry Valley Recreation and Park District

## BALL FIELDS



Looking for fields for  
practices or a  
tournament?

## Rental Rates

### **Monthly Practice Rate:**

\$300/month

Includes (2) practices per week  
for (2) hours each

### **Tournament Rental Rates:**

\$300/day for each field  
reserved.

#### 1-2 Fields

Refundable Deposit: \$250  
Maintenance Fee: \$250/day

#### 3 or More Fields

Refundable Deposit: \$500  
Maintenance Fee: \$500/day

#### \$50 Single Field Game

(2) Game Maximum, No Lights, No  
Set-Up, No Bases

## Tournament Fees Include:

- Field Rental
- Staff available for general trouble shooting
- Field Maintenance - set-up for 1st game(s) w/ bases & pitching mounds, field(s) will be periodically drug, watered and chalked.
- Available and stocked restrooms
- Restrooms are periodically cleaned
- Trash barrels emptied

***All trash in the dugouts and bleachers are the responsibility of the tournament personnel.***

**LIGHTS ARE AVAILABLE  
ON ALL FIELDS (1-7)**

## Field Details

### **Field #1**

- Bullpen - 1st and 3rd baseline
- Base pegs: 60', 65', 70', 80', 90'
- Center 395', Left 326', Right 319'

### **Field #2**

- Bullpen - 1st and 3rd baseline
- Base pegs: 60', 65', 70'
- Center 263', Left 226', Right 217'

### **Field #3**

- Bullpen - 1st baseline
- Base pegs: 60', 65', 70'
- Center 238', Left 233', Right 233'

### **Field #4**

- Base pegs: 50', 55', 60'
- Center 145', Left 145', Right 146'

### **Field #5**

- Base pegs: 60', 65'
- Center 231', Left 235', Right 231'

### **Field #6**

- Bullpen - 1st and 3rd baseline
- Base pegs: 60', 65', 70', 80'
- Center 248', Left 247', Right 249'

### **Field #7**

- Base pegs: 60', 65', 70'
- Center 223', Left 208', Right 224'